

Mapping Human Perceived Importance in South Suriname

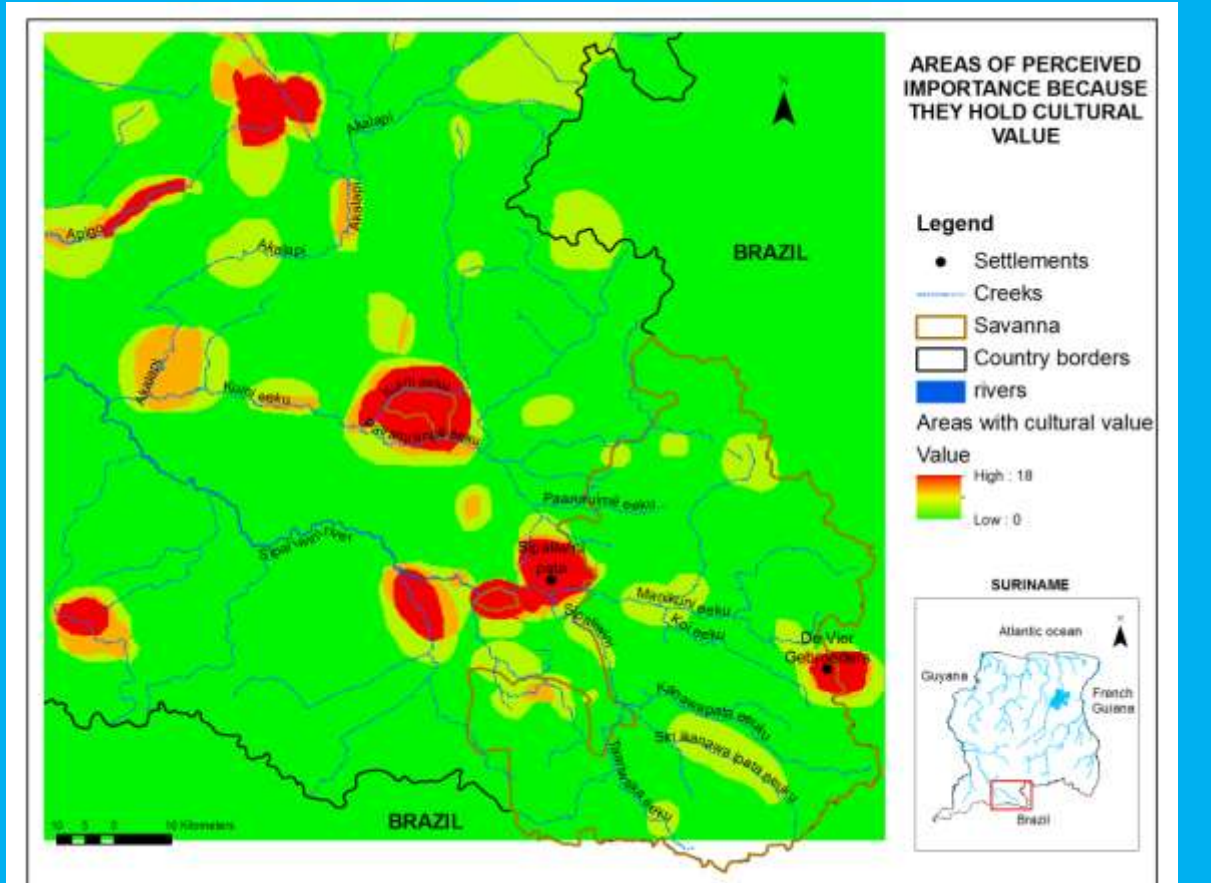
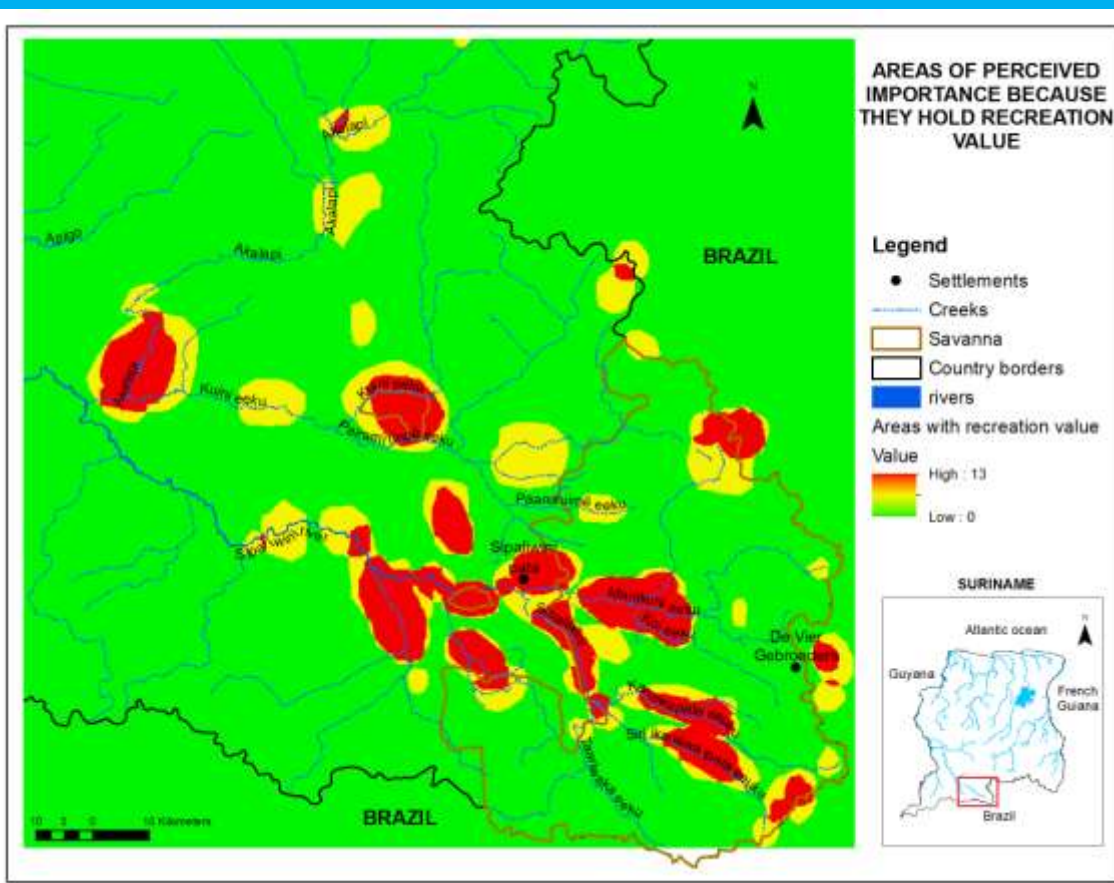
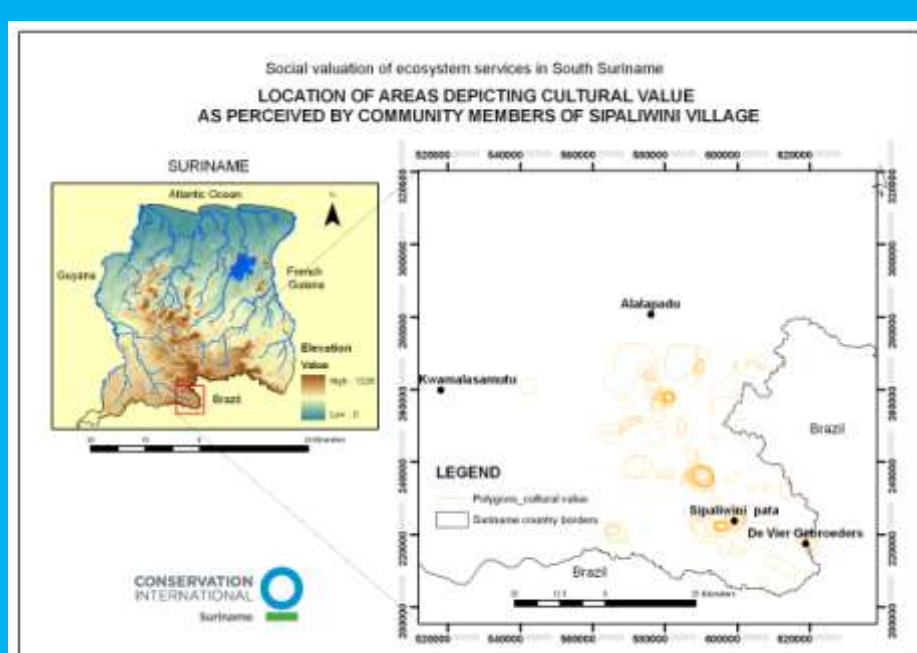
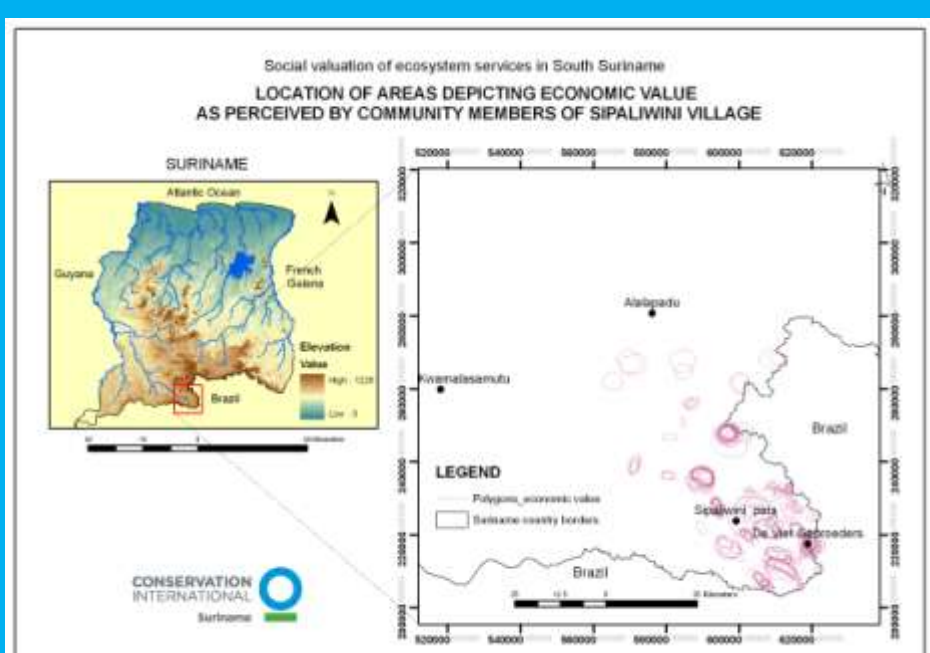
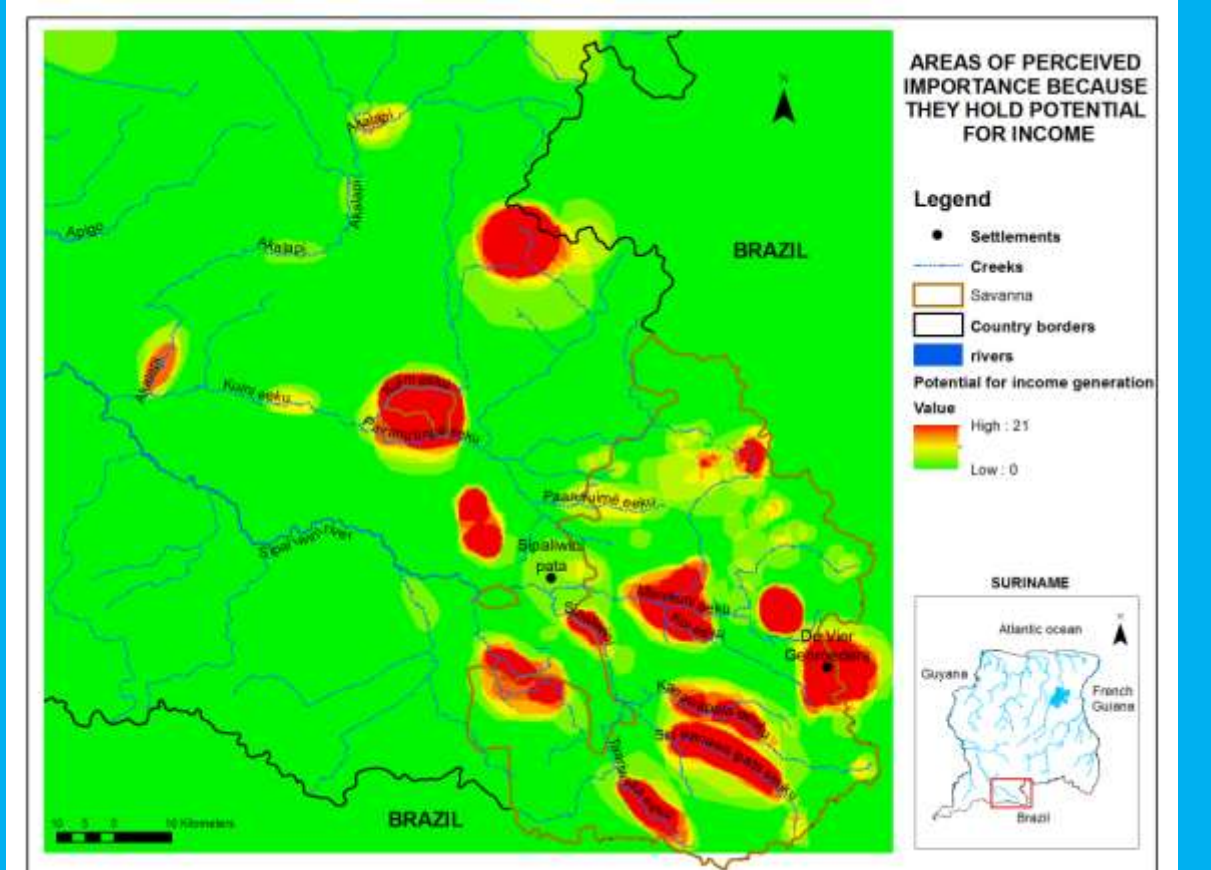
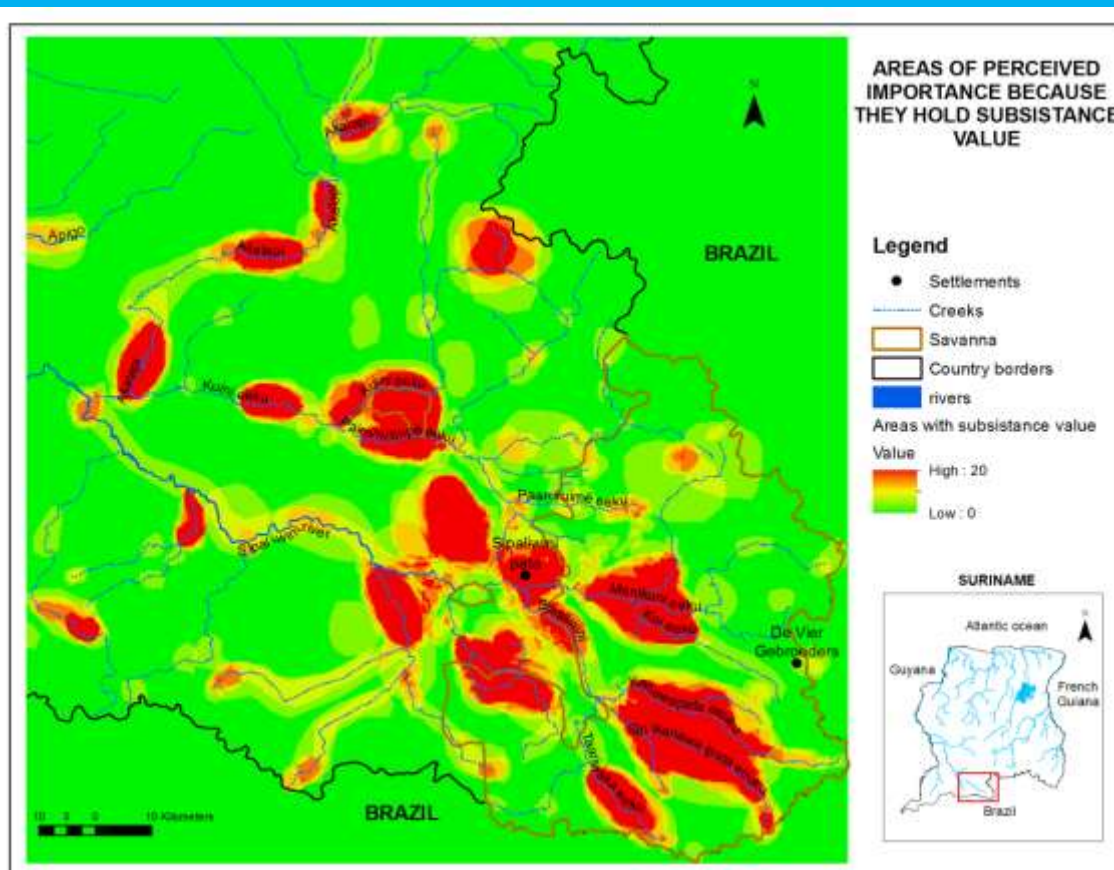
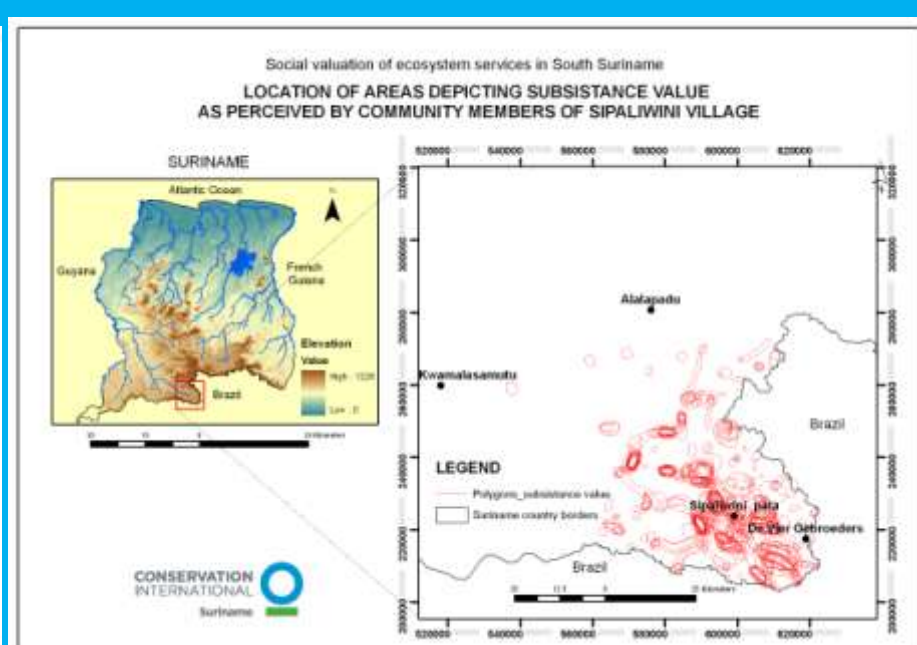
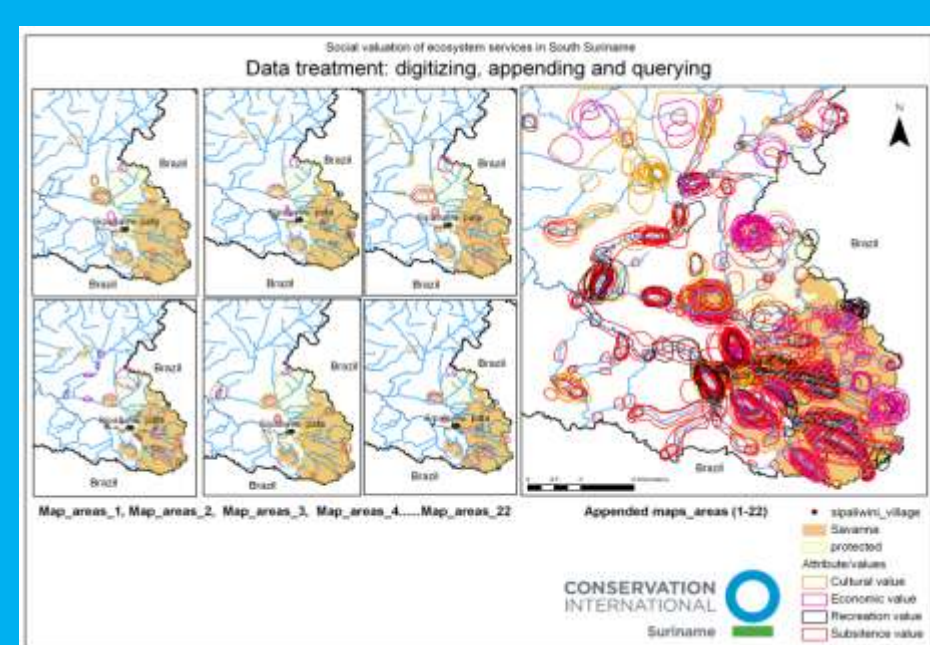
1. UNDERSTANDING AND IDENTIFYING VALUES CATEGORIES



2. MAPPING AREAS OF VALUE USING PARTICIPATORY APPROACHES



3. PROCESSING AND ANALYSING INFORMATION.



Results for Sipaliwini village. Acknowledgments to all member of the community for the great participation.

January 18th-20th 2012.